

## DSL 302 G QUICK START GUIDE

### Overview

This Quick Start Guide will take you through the steps to set-up your service shown below. Please make sure you complete all the steps in the order they are shown to avoid any problems with the configuration of your service.

**Step 1 Your service configuration information**

**Step 2 Understanding your Usernames & Passwords**

**Step 3 Installing your modem & configuring your PC**

**Step 4 Configuring your modem to connect to the Internet**

**Step 5 Completing the service activation process**

**Step 6 Reconnecting to the Internet**

### Step 1 Your service configuration information

Your service configuration information is shown below. You will need this information when setting up your DSL connection for the first time. Please keep this information in a safe place for future reference.

Please be aware that the billing for your service will commence on [date].

<b>Service Details</b>	
ADSL Plan	
ADSL Telephone Number	
Supplied Hardware	
Permanent Dynamic IP Address	
Commander Primary DNS	203 . 191 . 160 . 68
Commander Secondary DNS	203 . 191 . 160 . 83
<b>Additional Network IPs</b>	
Network 1	
Network 2	
<b>ADSL Connection Username &amp; Password</b>	
Username	@commander360.com.au
Password	
<b>Email configuration</b>	
Incoming mail server (receive)	pop.commander360.com
Outgoing mail server (send)	smtp.commander360.com
<b>Online Support Centre Username &amp; Password</b>	
Username	
Password	

## DSL 302 G QUICK START GUIDE

### Step 2 Understanding your Usernames & Passwords

To provide you with enhanced security Commander has supplied you with 3 usernames and passwords. Your usernames and passwords are explained here for use when configuring your service and future reference.

#### 1. ADSL Connection - Username and Password

This is the username and password used by your modem or router to connect to the Commander network. Both the username and password are pre-set as shown in the table above. When configuring your service you will be asked to enter these details into your PC.

The format of your username and password will be as follows:

Username: [Your Telephone Number]@commander360.com  
Password: 8 alphanumeric characters

Your username cannot be changed as it is a unique identifier on the Commander network. If you wish to change your ADSL connection password please log into the Online Support Centre at <http://www.commander360.com/support.html>

After you have changed your details you will be asked to re-connect your service to update your settings.

#### 2. Email - Username and Password

Access to your email is secured via a separate username and password. This is the username and password used by your email software to log onto our email servers. You will also be able to use this same username and password to access your email using a browser over the Internet – this is referred to as Webmail.

The Webmail online guide is available at the Online Support Centre at <http://www.commander360.com/support.html>

You choose both your username and password for your email at the time you configure your email service. Any subsequent changes can be made at the Online Support Centre.

The format of your username and password will be as follows:

Username: Your choice of 8 alpha OR numeric characters with at least 1 number  
Password: 8 alphanumeric characters

#### 3. Online Support Centre - Username and Password

The Online Support Centre is available at <http://www.commander360.com/support.html>

When accessing the Online Support Centre you will need to enter your Online Support Centre username and password. Here you can view your usage, pay bills and manage your broadband account. The username you have been allocated is the same as your Commander account number. It is not possible to change your account number so please ensure only authorised people have access to this information.

Your Online Support Centre password is pre-set as shown in the table above. Please go to the Online Support Centre to change any of your passwords. For security reasons you will be asked to answer your secret question when resetting any of your passwords.

The format of your username and password will be as follows:

Username: [Your Account Number]  
Password: 8 alphanumeric characters

You will be asked to supply your account number when calling customer service or technical support so please keep this with you when contacting Commander.

## DSL 302 G QUICK START GUIDE

### Step 3 Installing your router & configuring your PC

The DSL-302(G) provides optimal performance when used in conjunction with a stand alone PC. The 302G will operate within a network; however this is not covered in this document.

Commander recommends utilising the cabling and software supplied with the device.

Use of the configuration CD, however, is not recommended unless configuring a USB connection or experiencing troubles with the Ethernet connection as outlined below.

Although the CD supplied with the device contains useful material, in most cases the instructions below are all you require to get online.

#### Cabling the modem

1. Connect the power cable supplied to the power connector on the rear panel of the DSL-302G modem and connect it into a 240-volt AC power outlet.
2. The POWER LED should turn green and stay on. After approximately five seconds the STATUS LED should begin to flash or blink continuously.
3. Connect one end of the supplied, standard telephone cable (RJ11 cable), into the ADSL PORT on the rear panel of the DSL-302G. Connect the other end to the ADSL enabled phone outlet.
4. If the cables are connected correctly, then after approximately 15-45 seconds the ADSL LED should turn green and remain lit. The STATUS LED should continue to flash / blink continuously.
5. Connect one end of the Blue Ethernet cable supplied, into the ETHERNET PORT on the rear panel of the modem and the other end to the Ethernet NIC card of your PC.
6. The ETHERNET LED should turn green and stay lit.

#### Configuring the Computer for DHCP

##### Setup Guide for a PC using Windows XP

1. Quit all open programs before starting installation.
2. Select Start, select Settings, select Control Panel, and then double-click Network Connections.
3. Network Connections window appears, select Local Area Connection for DSL-302G modem. Right mouse click, select Properties.
4. The Local Area Connection Properties window appears. Select Internet Protocol (TCP/IP) in the window. This connection uses the following items: select Properties.
5. Select Obtain an IP address automatically. Click OK.

##### Setup Guide for a PC using Windows 2000

1. Quit all open programs before starting installation.
2. Select Start, select Settings, select Control Panel, and then double-click Network and Dial-up Connections.
3. Network and Dial-up Connections window appears, select Local Area Connection. Right mouse click, select Properties.
4. The Local Area Connection Properties window appears. Select Internet Protocol (TCP/IP) in the window "Components checked are used by this connection": select Properties.
5. Select Obtain an IP address automatically. Click OK.

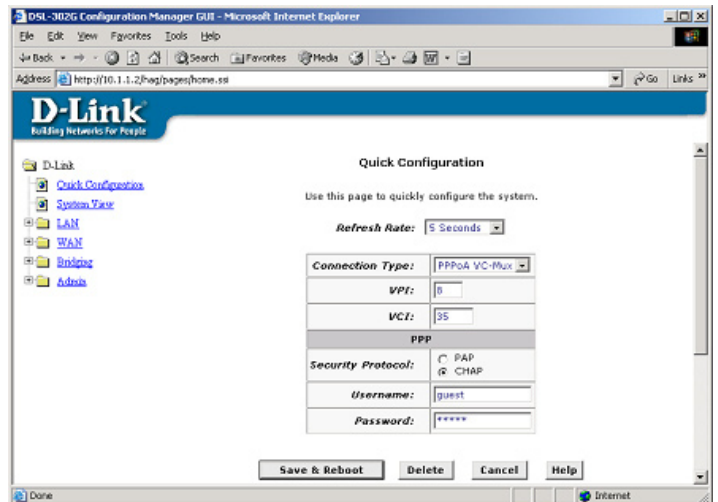
## DSL 302 G QUICK START GUIDE

### Setup Guide for a PC using Windows Me

1. Quit all open programs before starting installation.
2. Select Start, select Settings, select Control Panel, and then double-click Network.
3. Network window appears, select Configuration tab, select TCP/IP component that connects the PC NIC to the DSL-302G modem, and select Properties.
4. The TCP/IP Properties window appears. Select Obtain an IP address automatically. Click OK.

### Configuring the DSL-302G modem

1. Open your web browser (Internet Explorer, Netscape, etc.). In the Address Bar enter <http://10.1.1.1> Hit Enter or Go.
2. An authentication dialogue box will appear.  
Login with Username: Admin / Password: Admin
3. The D-Link Account Configuration web page should appear.
4. In the field User Name enter the ADSL connection username <ADSL username>@commander360.com.
5. In the field Password enter the ADSL connection password <ADSL password>.
6. Select the security protocol as chap .
7. Click "Save and Reboot".
8. A dialogue box appears. Select OK, wait 30 seconds then select refresh.
9. The connection status under PPP Information should display as "connected".



### Step 4 Completing The Service Activation Process

Once you have completed the installation and connection of your hardware you will be taken to the Commander Self-Activation Screen. This screen will guide you through the rest of the process to configure your service. You will be asked to complete the following steps before your connection to the Internet is established:

1. Agree to the Commander Standard Form of Agreement
2. Configure your email services
3. Print your email configuration details

For the final stage of configuration you will be asked to disconnect and re-connect your Commander Broadband service. Please use the Modem Configuration instructions for either your USB or Ethernet connection to disconnect and re-connect your service.

For assistance in configuring your software please browse the Online Support Centre at

<http://www.commander360.com/support.html> OR call our Technical Assistance Team on 1300 767 237.